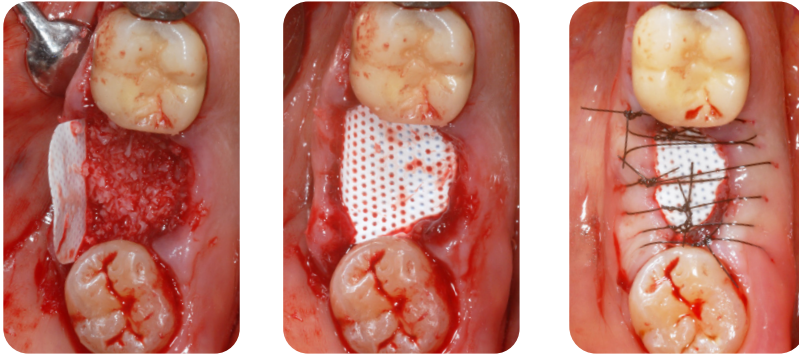
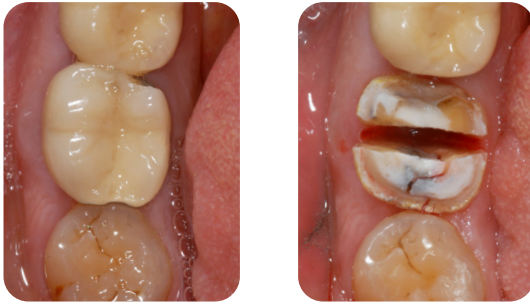




**Surgical Esthetics™**  
*more vital bone*

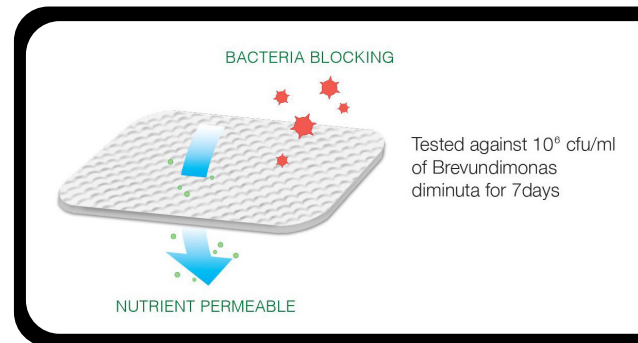
## Cytoflex-SE® PTFE

### Non-Absorbable Membranes



#### Common Uses:

- Extraction ridge preservation
- Periodontal defect repair
- Guided bone regeneration (GBR)
- Guided tissue regeneration (GTR)



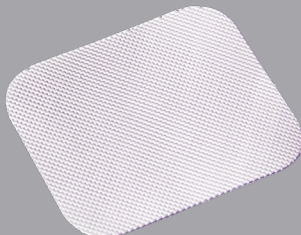
#### Features & Benefits:

- Easily trimmed & adapted to tissue contours
- Microporous structure inhibits bacterial penetration
- Allows interstitial fluid flow for improved healing
- Textured surface holds membrane position during healing
- Can be tacked in place



**12x24mm**

(Single: PTFE12x24)  
(5-pack: PTFE12x24-5)  
(10-pack: PTFE12x24-10)



**25x30mm**

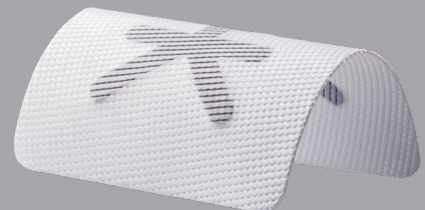
(Single: PTFE25x30)  
(5-pack: PTFE25x30-5)

#### Titanium Reinforced



**12x24mm**

(PTFE12x24Ti)



**25x30mm**

(PTFE25x30Ti)