

SKOOLTOOLZ with Akro-Flex

BEAUTIFUL BIOMIMETIC RESTORATIONS



FIGURE 1



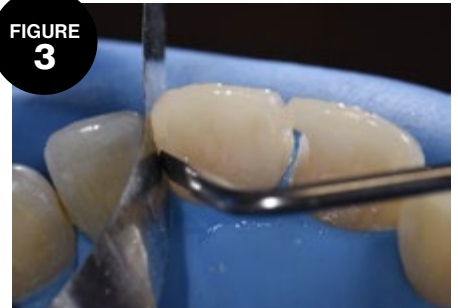
PREOPERATIVE VIEW:
Class III lesions on teeth #8 and #9.

FIGURE 2



INTRAOPERATIVE VIEW:
Excavation of caries.

FIGURE 3



Freehand development of palatal embrasure form with **AKRO-FLEX**. The thin, flexible brush/blade allows for ultimate control in sculpting this often neglected and improperly-shaped area.

FIGURE 4



Cervical adaptation of resin to the restoration.

FIGURE 5



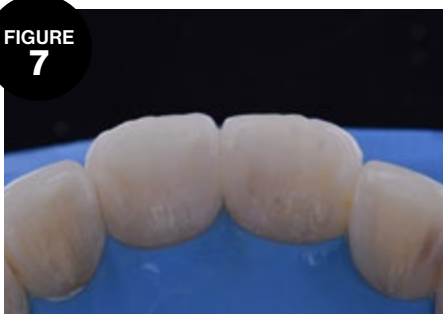
Significant interproximal extension, allowing both buccolingual and apical brushing of composite against the margins in this limited access region. Note the angle of the shank and the angle of the working brush/blade, which is clearly interproximal.

FIGURE 6



It is customary to complete a restoration on one tooth before switching focus to another. The sheer thinness of the **AKRO-FLEX** blade allows for unimpeded proximal access to the restoration allowing one to sculpt proper form without touching the unrestored tooth.

FIGURE 7



POSTOPERATIVE VIEW
A beautifully and biomimetically-completed restoration.

SKOOLTOOLZ KIT WITH AKRO-FLEX

TNTAMKITAKRO



SkoolToolz Kit with Akro-Flex	TNTAMKITAKRO
Akro-Flex™ Composite Instrument	AKRO-FLEX
SkoolToolz 1, Posterior Occlusal Shaper	TNTAM1
SkoolToolz 2, Universal Thin PFI	TNTAM2
SkoolToolz 3, Curved Ball Burnisher	TNTAM3
Posterior Sickle Scaler, EverEdge 2.0	S204S9E2
5 Instrument Signature Series cassette, Lavender	IM6056



SkoolToolz 1,
Posterior Occlusal
Shaper
TNTAM1

SkoolToolz 2,
Universal Composite
Instrument
TNTAM2

SkoolToolz 3,
Curved Ball
Burnisher
TNTAM3

Akro-Flex™
Composite
Instrument
AKRO-FLEX

Dr. Clarence Tam is originally from Toronto, Canada, where she completed her Doctor of Dental Surgery and General Practice Residency at the University of Western Ontario and the University of Toronto, respectively. Clarence's practice is limited to cosmetic and restorative dentistry. She is well-published to both the local and international dental press, writing articles, reviewing and developing prototype products and techniques in clinical dentistry. She frequently and continually lectures internationally.

Clarence is the Chairperson and Director of the New Zealand Academy of Cosmetic Dentistry. She is currently one of two individuals in Australasia to hold Board-Certified Accredited Member Status with the American Academy of Cosmetic Dentistry. Clarence is an Opinion Leader for multinational dental companies Kuraray Noritake, J Morita Corp, Henry Schein NZ, Ivoclar Vivadent, DentsplySirona, 3M ESPE, Kerr, GC Australasia, SDI, Coltene, Triodent and is the only Voco Fellow in Australia and New Zealand. She holds Fellowship status with the International Academy for DentoFacial Esthetics. She is a passionate and approachable individual, and is committed to having an interactive approach with patients in all of her cases to maximize predictability.

Learn more about SkoolToolz and Dr. Tam at [Hu-Friedy.com/Community/Clarence-Tam](https://www.hufriedy.com/Community/Clarence-Tam)

All company and product names are trademarks of Hu-Friedy Mfg. Co., LLC, its affiliates or related companies, unless otherwise noted. Marks not registered in all jurisdictions.
©2021 Hu-Friedy Mfg. Co., LLC. All rights reserved. HFL-046/0521